

# Dearborn County Section Corners

in the City of Lawrenceburg, State of Indiana

GridPoint: 1

Section 4

Township 5 North

Range 1 We

Monumentation: Existing stone

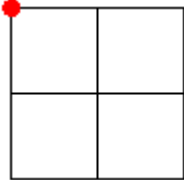
Height:

Condition: Good

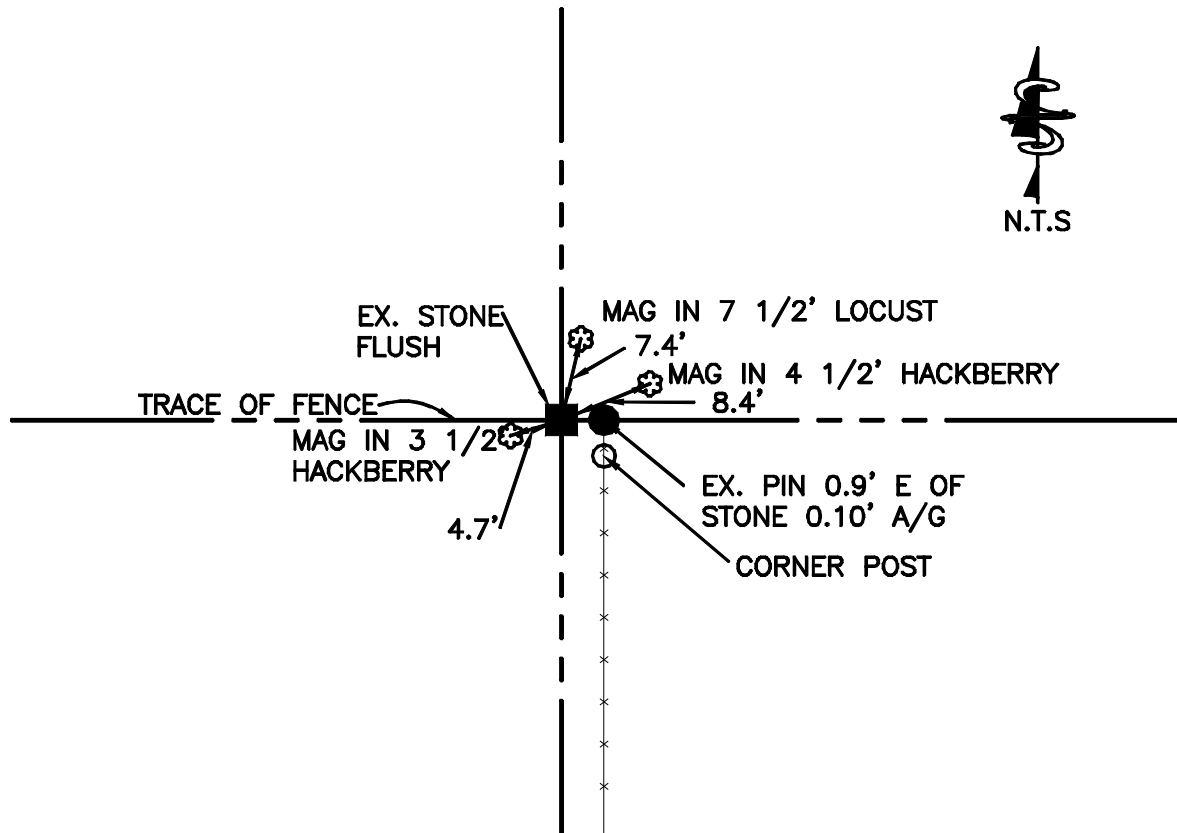
Northing: 1415478.64      Easting: 547315.20

Procedure: Referenced in a Survey plat dated March 13, 1994 by David T. Crouch.

Position



Sketch



Coordinate determination method used is GPS and/or conventional traverse. Horizontal datum system is NAD '83. The Indiana minimum standards of measurements were used according to state statutes 865 IAC 1-12-7 and 865 IAC 1-12-8 (known as Rule 12). Northings and Eastings based on Indiana State Plane Coordinates derived from City of Lawrenceburg GIS monuments which are the basis of subject coordinate system.

Instruments used were 05" Topcon Total Stations and Leica SR530 GPS (System 500) or Sokkia Locus.

David T. Crouch, LS-0196 on January 22, 2001.  
Registered Surveyor's Name, Number

Photograph



201 W. William Street  
Lawrenceburg, IN 47025  
(812) 537-2145

# Dearborn County Section Corners

in the City of Lawrenceburg, State of Indiana

GridPoint: 2

Section 4

Township 5 North

Range 1 We

Monumentation: Ex. 4-3/4" X 4-3/4" concrete monument w/ Cap

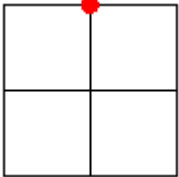
Height: 0.6' Below Ground

Condition: Good

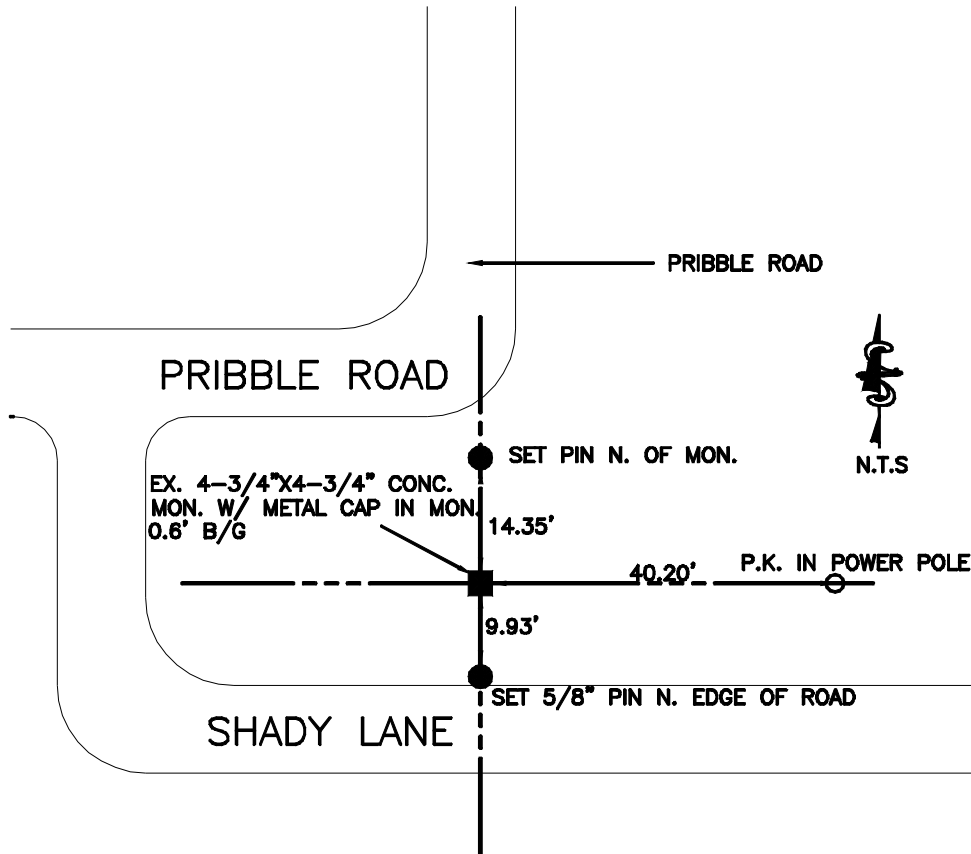
Northing: 1415497.88 Easting: 549932.00

Procedure: Referenced by a 4.00 ac. Survey by D.T. Crouch dated June 1981.

Position



Sketch



Coordinate determination method used is GPS and/or conventional traverse. Horizontal datum system is NAD '83. The Indiana minimum standards of measurements were used according to state statutes 865 IAC 1-12-7 and 865 IAC 1-12-8 (known as Rule 12). Northings and Eastings based on Indiana State Plane Coordinates derived from City of Lawrenceburg GIS monuments which are the basis of subject coordinate system.

Instruments used were 05" Topcon Total Stations and Leica SR530 GPS (System 500) or Sokkia Locus.

David T. Crouch, LS-0196 on March 30, 2001.  
Registered Surveyor's Name, Number

Photograph



201 W. William Street  
Lawrenceburg, IN 47025  
(812) 537-2145

# Dearborn County Section Corners

in the City of Lawrenceburg, State of Indiana

GridPoint: 3

Section 4

Township 5 North

Range 1 We

Monumentation: Ex. 4-3/4" X 4-3/4" Conc. Monument

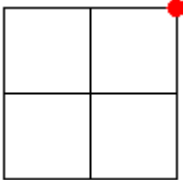
Height: 0.7' Above Ground

Condition: Good

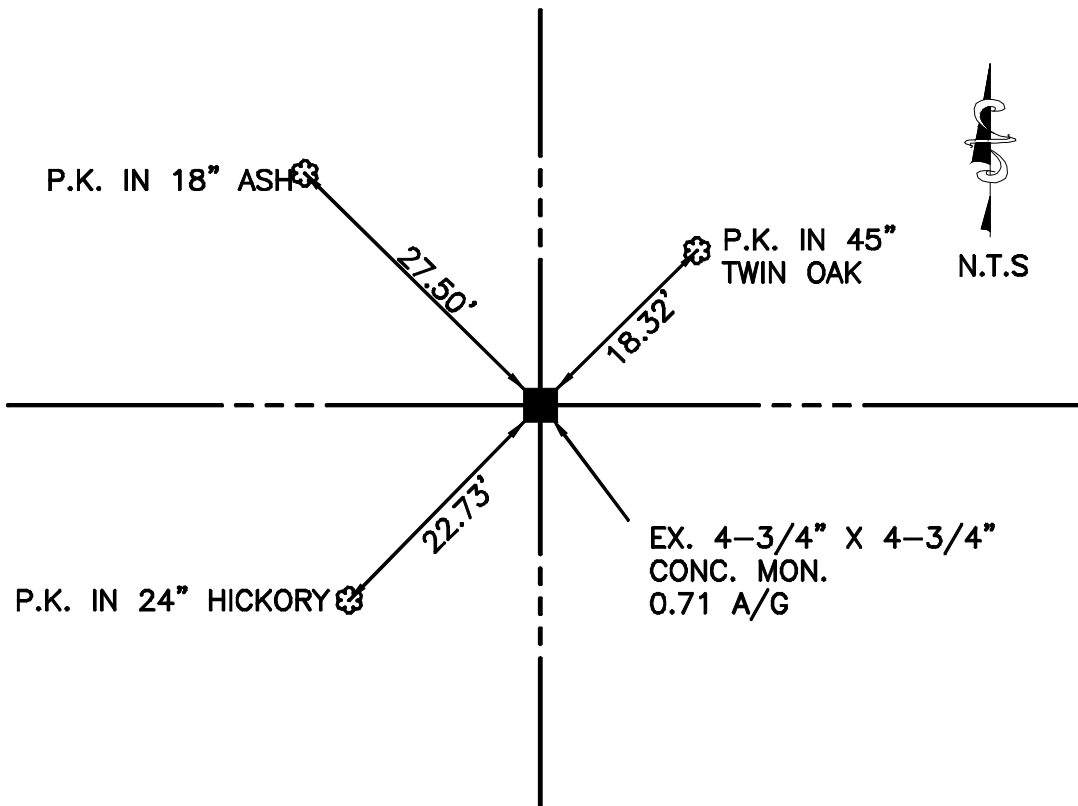
Northing: 1415577.91 Easting: 552532.65

Procedure: Recovered from references in the Dearborn County Section Corner Books dated June 24, 1996.

Position



Sketch



Coordinate determination method used is GPS and/or conventional traverse. Horizontal datum system is NAD '83. The Indiana minimum standards of measurements were used according to state statutes 865 IAC 1-12-7 and 865 IAC 1-12-8 (known as Rule 12). Northings and Eastings based on Indiana State Plane Coordinates derived from City of Lawrenceburg GIS monuments which are the basis of subject coordinate system.

Instruments used were 05" Topcon Total Stations and Leica SR530 GPS (System 500) or Sokkia Locus.

David T. Crouch, LS-0196 on April 7, 2001.  
Registered Surveyor's Name, Number

Photograph



201 W. William Street  
Lawrenceburg, IN 47025  
(812) 537-2145

# Dearborn County Section Corners

in the City of Lawrenceburg, State of Indiana

GridPoint: 5

Section 4

Township 5 North

Range 1 We

Monumentation: Set Conc. Mon. W/2-1/2" Brass Disc.

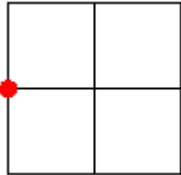
Height: Flush

Condition: Good

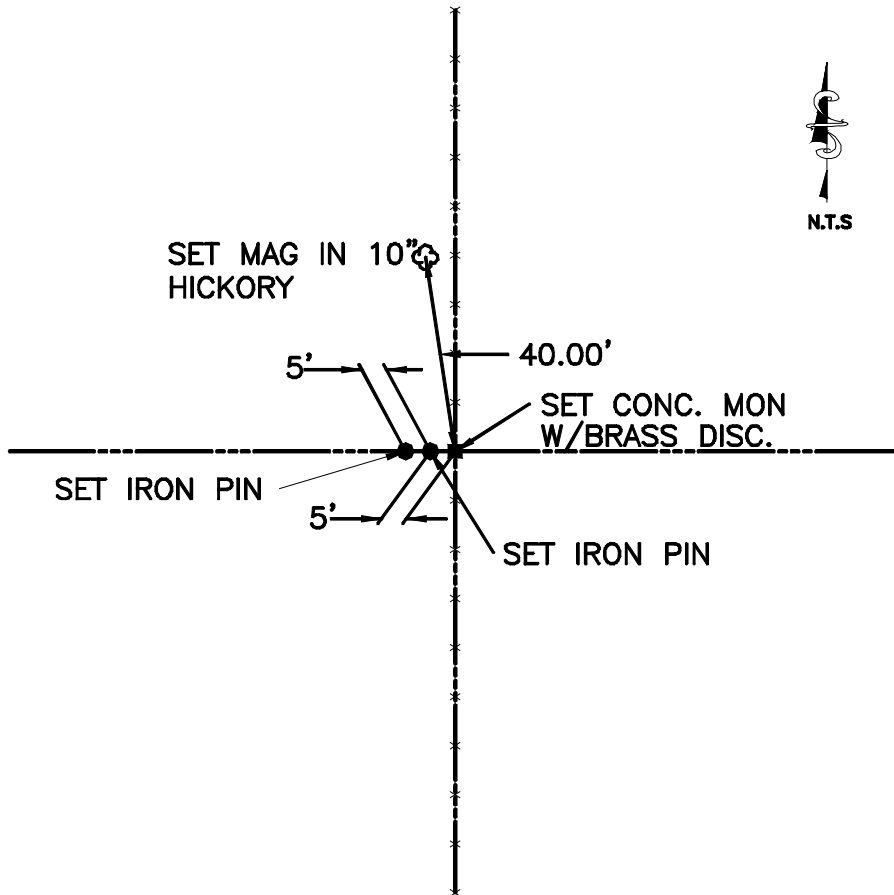
Northing: 1413016.85 Easting: 547326.04

Procedure: Referenced by a 63.122 Acre survey by Roger Woodfill dated August 1984.

Position



Sketch



Coordinate determination method used is GPS and/or conventional traverse. Horizontal datum system is NAD '83. The Indiana minimum standards of measurements were used according to state statutes 865 IAC 1-12-7 and 865 IAC 1-12-8 (known as Rule 12). Northings and Eastings based on Indiana State Plane Coordinates derived from City of Lawrenceburg GIS monuments which are the basis of subject coordinate system.

Instruments used were 05" Topcon Total Stations and Leica SR530 GPS (System 500) or Sokkia Locus.

David T. Crouch, LS-0196 on February 27, 2003.  
Registered Surveyor's Name, Number



201 W. William Street  
Lawrenceburg, IN 47025  
(812) 537-2145

Photograph



# Dearborn County Section Corners

in the City of Lawrenceburg, State of Indiana

GridPoint: 6

Section 4

Township 5 North

Range 1 We

Monumentation: Existing Conc. Monument with Woodfill Cap #S-0161

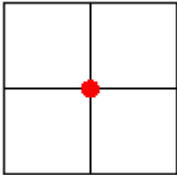
Height: Flush

Condition: Good

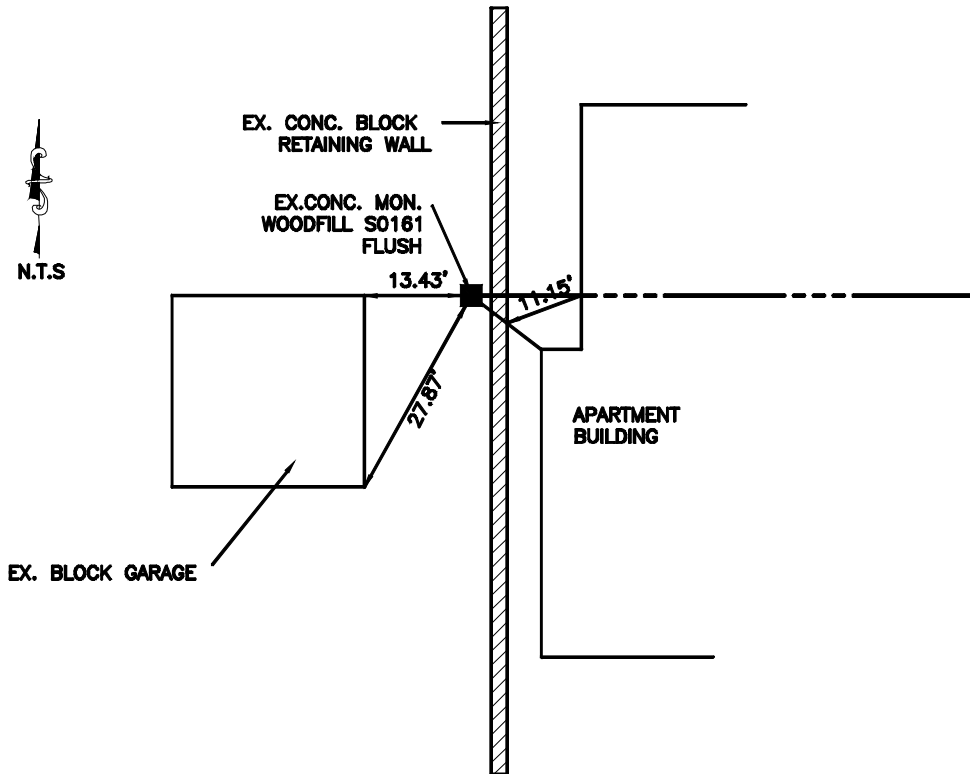
Northing: 1413010.38 Easting: 549944.90

Procedure: Recovered an existing concrete monument set by R. Woodfill from Dearborn County Surveyor's records found monument in good condition, flush with surface with cap intact.

Position



Sketch



Coordinate determination method used is GPS and/or conventional traverse. Horizontal datum system is NAD '83. The Indiana minimum standards of measurements were used according to state statutes 865 IAC 1-12-7 and 865 IAC 1-12-8 (known as Rule 12). Northings and Eastings based on Indiana State Plane Coordinates derived from City of Lawrenceburg GIS monuments which are the basis of subject coordinate system.

Instruments used were 05" Topcon Total Stations and Leica SR530 GPS (System 500) or Sokkia Locus.

David T. Crouch, LS-0196 on January 18, 2000.  
Registered Surveyor's Name, Number

Photograph



201 W. William Street  
Lawrenceburg, IN 47025  
(812) 537-2145

# Dearborn County Section Corners

in the City of Lawrenceburg, State of Indiana

GridPoint: 7

Section 4

Township 5 North

Range 1 We

Monumentation: Existing concrete monument

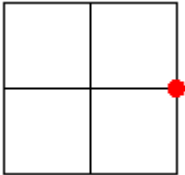
Height: 0.70 Above Ground

Condition: New

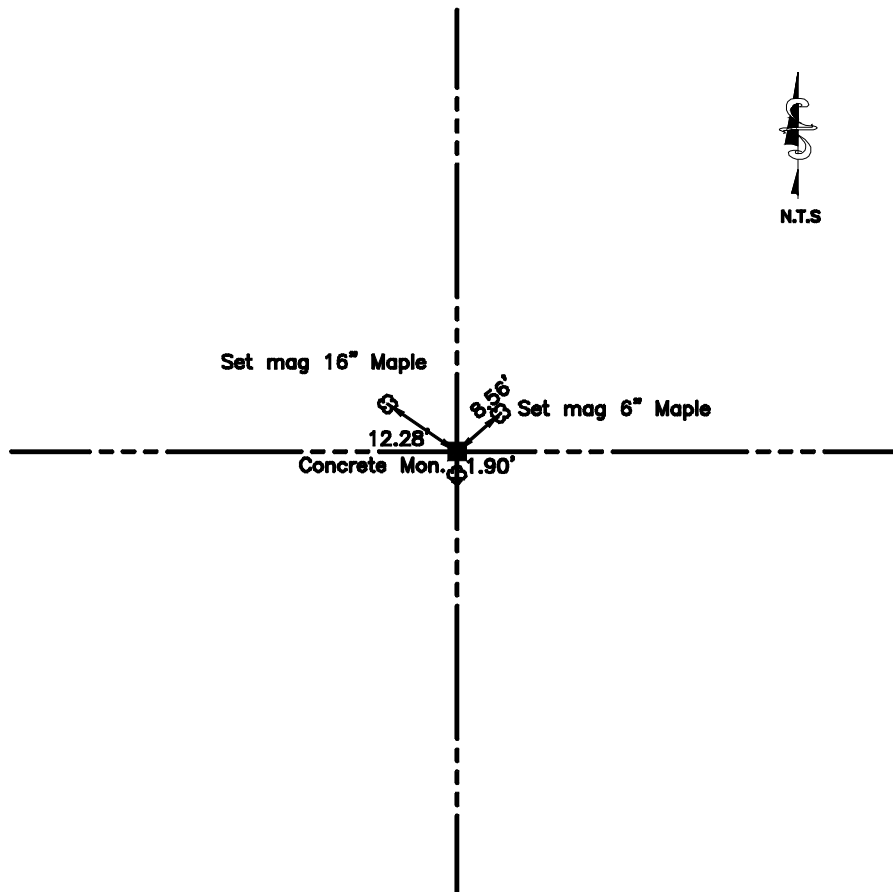
Northing: 1413001.75 Easting: 552546.82

Procedure: Referenced by a 144.692 acre survey by D.T. Crouch dated October 1990.

Position



Sketch



Coordinate determination method used is GPS and/or conventional traverse. Horizontal datum system is NAD '83. The Indiana minimum standards of measurements were used according to state statutes 865 IAC 1-12-7 and 865 IAC 1-12-8 (known as Rule 12). Northings and Eastings based on Indiana State Plane Coordinates derived from City of Lawrenceburg GIS monuments which are the basis of subject coordinate system.

Instruments used were 05" Topcon Total Stations and Leica SR530 GPS (System 500) or Sokkia Locus.

David T. Crouch, LS-0196 on July 29, 2005.  
Registered Surveyor's Name, Number

Photograph



201 W. William Street  
Lawrenceburg, IN 47025  
(812) 537-2145

# Dearborn County Section Corners

in the City of Lawrenceburg, State of Indiana

GridPoint: 8

Section 5

Township 5 North

Range 1 We

Monumentation: Existing stone

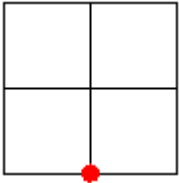
Height: Above Ground

Condition: Good

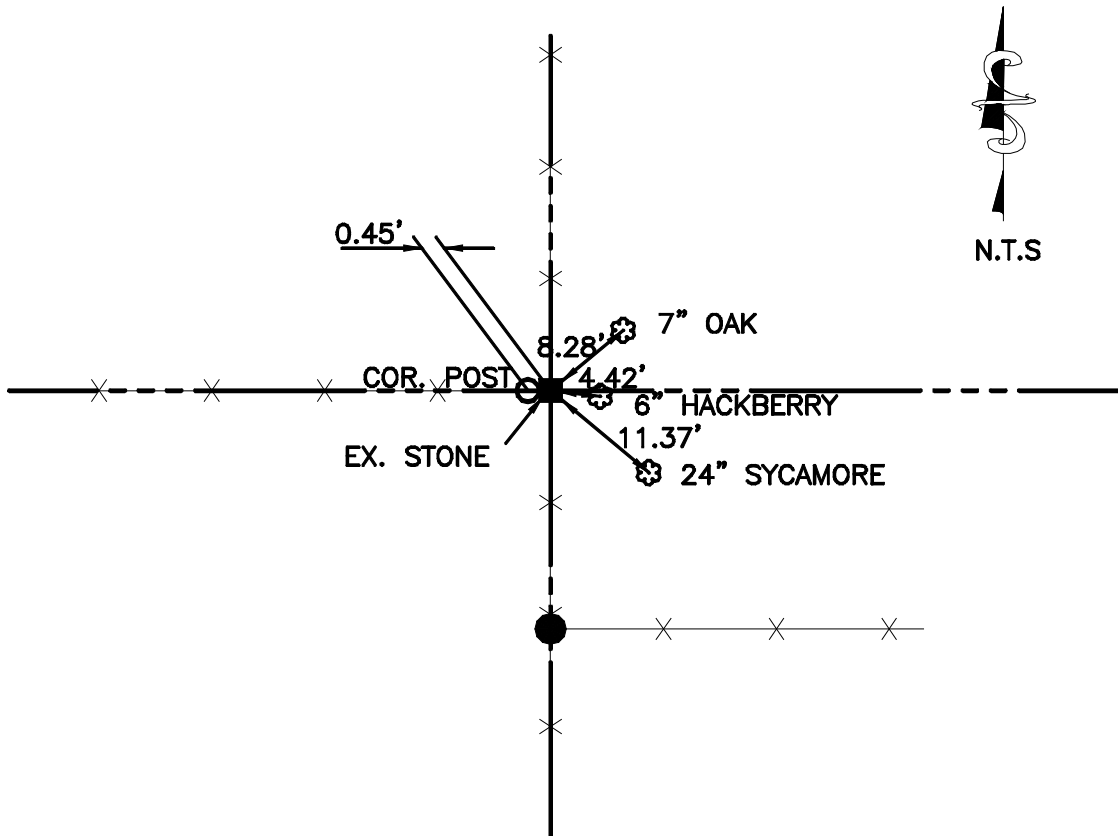
Northing: 1410418.98 Easting: 544709.77

Procedure: Recovered from a 143.887 Acre survey by D.T. Crouch August 28, 1995

Position



Sketch



Coordinate determination method used is GPS and/or conventional traverse. Horizontal datum system is NAD '83. The Indiana minimum standards of measurements were used according to state statutes 865 IAC 1-12-7 and 865 IAC 1-12-8 (known as Rule 12). Northings and Eastings based on Indiana State Plane Coordinates derived from City of Lawrenceburg GIS monuments which are the basis of subject coordinate system.

Instruments used were 05" Topcon Total Stations and Leica SR530 GPS (System 500) or Sokkia Locus.

David T. Crouch, LS-0196 on January 18, 2000.  
Registered Surveyor's Name, Number

Photograph



201 W. William Street  
Lawrenceburg, IN 47025  
(812) 537-2145

# Dearborn County Section Corners

in the City of Lawrenceburg, State of Indiana

GridPoint: 9

Section 4

Township 5 North

Range 1 We

Monumentation: Set Conc. Mon. W/2-1/2" Brass Disc.

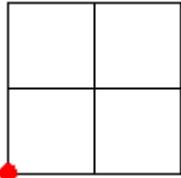
Height: 0.7' Above Ground

Condition: New

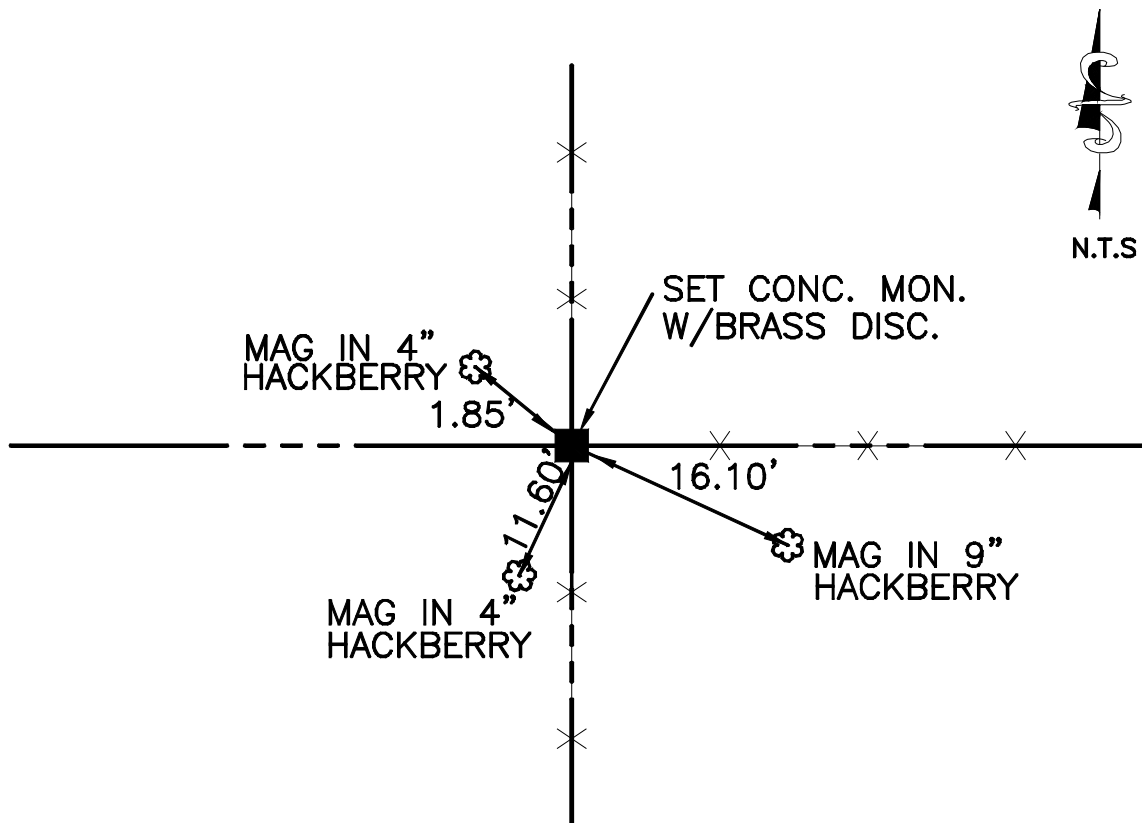
Northing: 1410485.50 Easting: 547339.47

Procedure: Referenced by Lehigh Acres, Section III (Slide 117) and a 36.40 Acre survey by D.T.C. dated July 2, 1984.

Position



Sketch



Coordinate determination method used is GPS and/or conventional traverse. Horizontal datum system is NAD '83. The Indiana minimum standards of measurements were used according to state statutes 865 IAC 1-12-7 and 865 IAC 1-12-8 (known as Rule 12). Northings and Eastings based on Indiana State Plane Coordinates derived from City of Lawrenceburg GIS monuments which are the basis of subject coordinate system.

Instruments used were 05" Topcon Total Stations and Leica SR530 GPS (System 500) or Sokkia Locus.

David T. Crouch, LS-0196 on January 22, 2001.  
Registered Surveyor's Name, Number

Photograph



201 W. William Street  
Lawrenceburg, IN 47025  
(812) 537-2145

# Dearborn County Section Corners

in the City of Lawrenceburg, State of Indiana

GridPoint: 10

Section 4

Township 5 North

Range 1 We

Monumentation: 5/8" Existing concrete monument

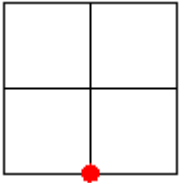
Height: Flush

Condition: New

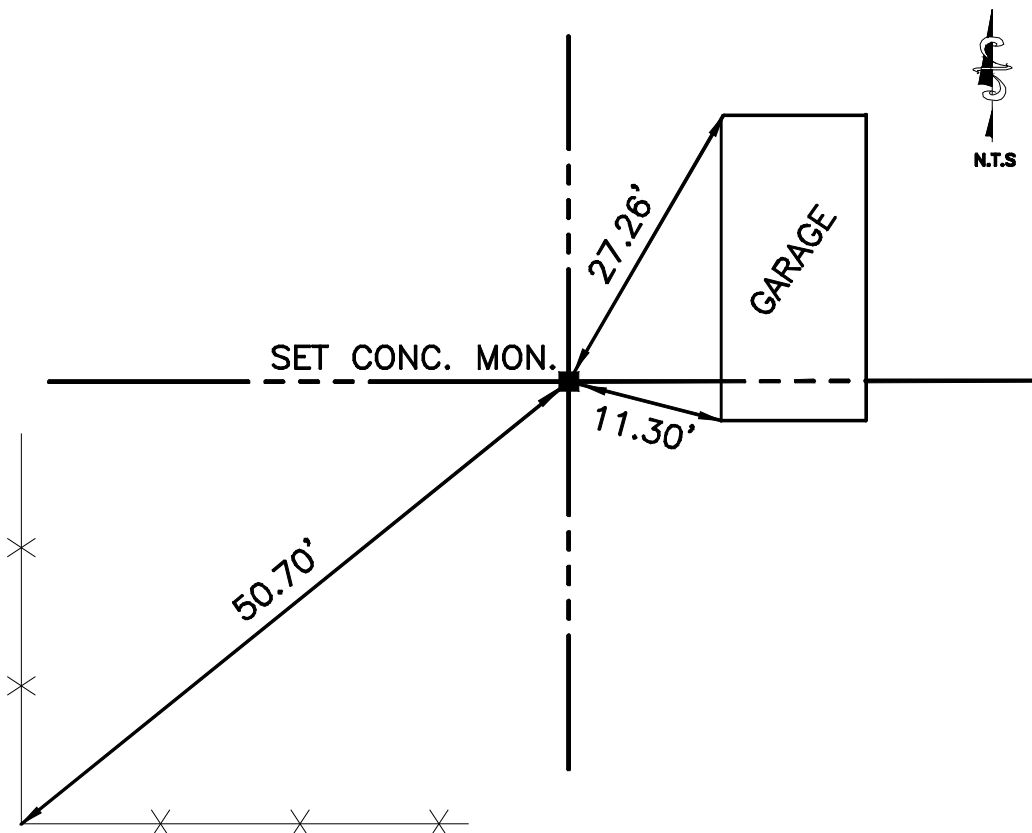
Northing: 1410450.00 Easting: 549966.88

Procedure: Single Proportionate Measurement was applied using the existing SE and SW corners.

Position



Sketch



Coordinate determination method used is GPS and/or conventional traverse. Horizontal datum system is NAD '83. The Indiana minimum standards of measurements were used according to state statutes 865 IAC 1-12-7 and 865 IAC 1-12-8 (known as Rule 12). Northings and Eastings based on Indiana State Plane Coordinates derived from City of Lawrenceburg GIS monuments which are the basis of subject coordinate system.

Instruments used were 05" Topcon Total Stations and Leica SR530 GPS (System 500) or Sokkia Locus.

David T. Crouch, LS-0196 on December 10, 2004.  
Registered Surveyor's Name, Number

Photograph



201 W. William Street  
Lawrenceburg, IN 47025  
(812) 537-2145

# Dearborn County Section Corners

in the City of Lawrenceburg, State of Indiana

GridPoint: 11

Section 4

Township 5 North

Range 1 We

Monumentation: Set Conc. Mon. w/2-1/2" Brass Disc.

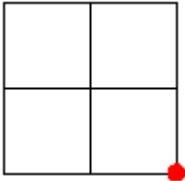
Height: Flush

Condition: Good

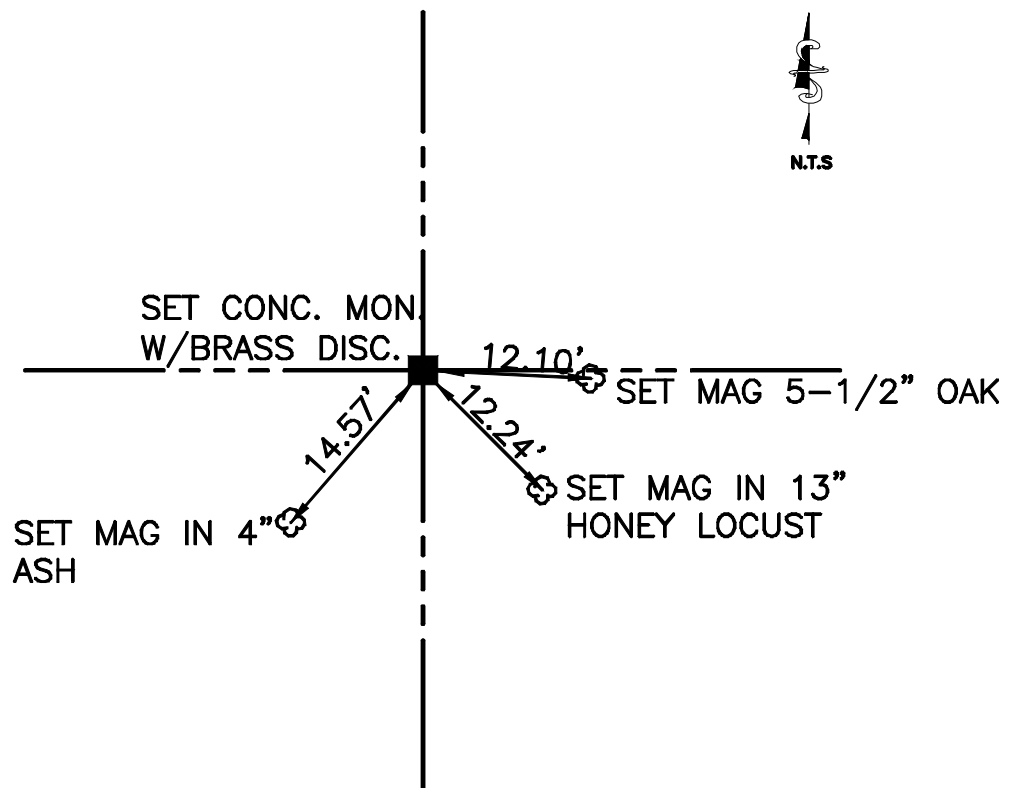
Northing: 1410414.71 Easting: 552578.37

Procedure: Referenced by Shady Lane Estates surveyed by D.T. Crouch dated January 1 1992

Position



Sketch



Coordinate determination method used is GPS and/or conventional traverse. Horizontal datum system is NAD '83. The Indiana minimum standards of measurements were used according to state statutes 865 IAC 1-12-7 and 865 IAC 1-12-8 (known as Rule 12). Northings and Eastings based on Indiana State Plane Coordinates derived from City of Lawrenceburg GIS monuments which are the basis of subject coordinate system.

Instruments used were 05" Topcon Total Stations and Leica SR530 GPS (System 500) or Sokkia Locus.

David T. Crouch, LS-0196 on February 1, 2003.  
Registered Surveyor's Name, Number

Photograph



201 W. William Street  
Lawrenceburg, IN 47025  
(812) 537-2145

# Dearborn County Section Corners

in the City of Lawrenceburg, State of Indiana

GridPoint: 12

Section 9

Township 5 North

Range 1 We

Monumentation: Existing fence post

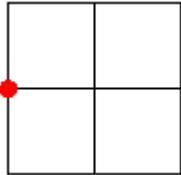
Height: Below Ground

Condition: Fair

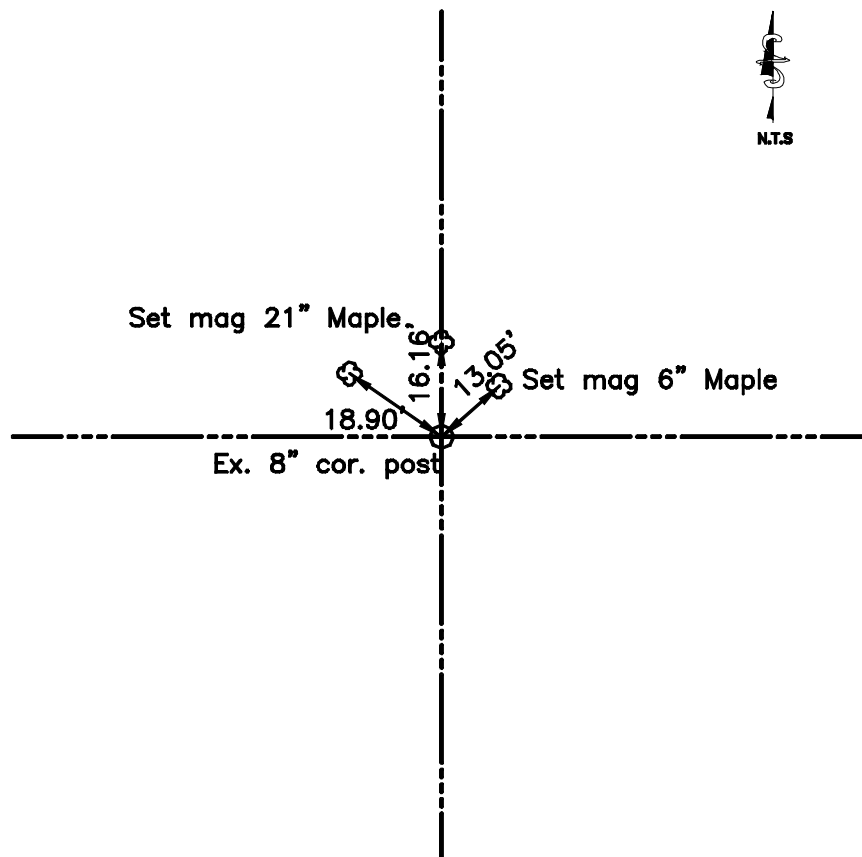
Northing: 1407732.22      Easting: 547361.90

Procedure: Referenced by a 0.75 Acre survey by Roger W, Woodfill dated July 17, 1980

Position



Sketch



Coordinate determination method used is GPS and/or conventional traverse. Horizontal datum system is NAD '83. The Indiana minimum standards of measurements were used according to state statutes 865 IAC 1-12-7 and 865 IAC 1-12-8 (known as Rule 12). Northings and Eastings based on Indiana State Plane Coordinates derived from City of Lawrenceburg GIS monuments which are the basis of subject coordinate system.

Instruments used were 05" Topcon Total Stations and Leica SR530 GPS (System 500) or Sokkia Locus.

David T. Crouch, LS-0196 on August 3, 2004.  
Registered Surveyor's Name, Number

Photograph



201 W. William Street  
Lawrenceburg, IN 47025  
(812) 537-2145

# Dearborn County Section Corners

in the City of Lawrenceburg, State of Indiana

GridPoint: 13

Section 9

Township 5 North

Range 1 We

Monumentation: Existing re-bar w/ aluminum Woodfill cap

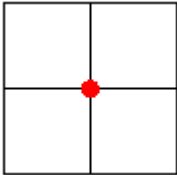
Height: Flush

Condition: Good

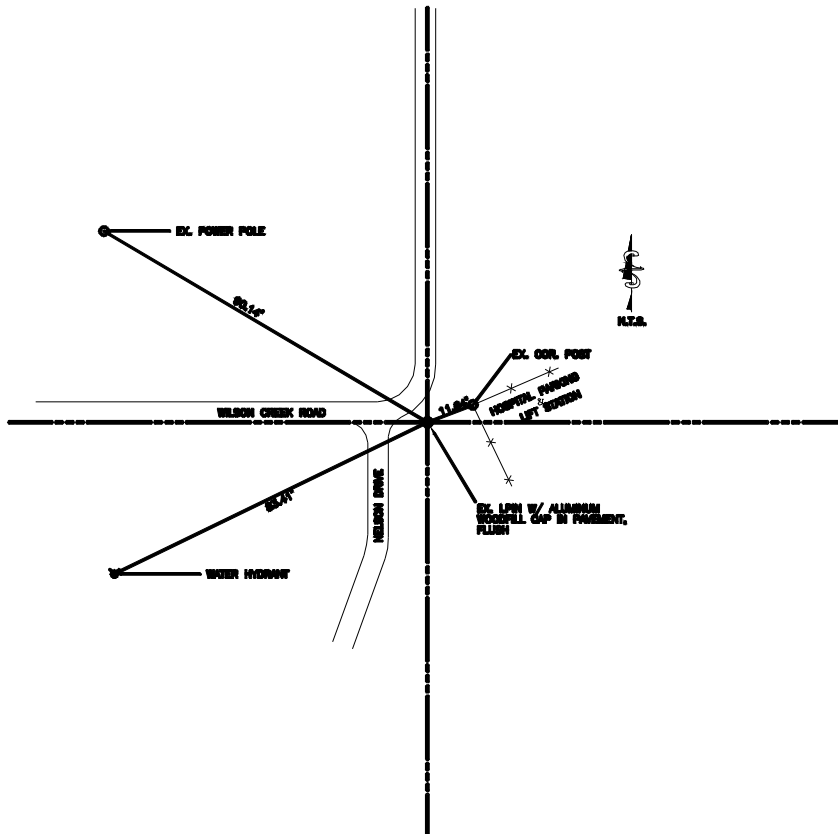
Northing: 1407700.66 Easting: 549990.48

Procedure: Recovered existing monument set by R. Woodfill of district nine survey co. which has been in place since at least 1988.

## Position



## Sketch



Coordinate determination method used is GPS and/or conventional traverse. Horizontal datum system is NAD '83. The Indiana minimum standards of measurements were used according to state statutes 865 IAC 1-12-7 and 865 IAC 1-12-8 (known as Rule 12). Northings and Eastings based on Indiana State Plane Coordinates derived from City of Lawrenceburg GIS monuments which are the basis of subject coordinate system.

Instruments used were 05" Topcon Total Stations and Leica SR530 GPS (System 500) or Sokkia Locus.

David T. Crouch, LS-0196 on December 14, 2000.  
Registered Surveyor's Name, Number



201 W. William Street  
Lawrenceburg, IN 47025  
(812) 537-2145

## Photograph



# Dearborn County Section Corners

*in the City of Lawrenceburg, State of Indiana*

GridPoint: 14

Section 9

Township 5 North

Range 1 We

Monumentation:

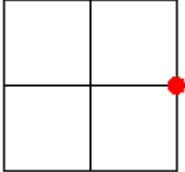
Height:

Condition:

Northing: 1407668.96      Easting: 552616.79

Procedure: Referenced by a 63.122 Acre survey by Roger Woodfill dated August, 1984

Position



Sketch

---

Corner cannot be set. The Section corner falls in the warehouse building in Lawrenceburg Industries Subdivision.

---

Coordinate determination method used is GPS and/or conventional traverse. Horizontal datum system is NAD '83. The Indiana minimum standards of measurements were used according to state statutes 865 IAC 1-12-7 and 865 IAC 1-12-8 (known as Rule 12). Northings and Eastings based on Indiana State Plane Coordinates derived from City of Lawrenceburg GIS monuments which are the basis of subject coordinate system.

Instruments used were 05" Topcon Total Stations and Leica SR530 GPS (System 500) or Sokkia Locus.

David T. Crouch, LS-0196 on  
*Registered Surveyor's Name, Number*

Photograph

**NO  
PICTURE  
AVAILABLE**



201 W. William Street  
Lawrenceburg, IN 47025  
(812) 537-2145

# Dearborn County Section Corners

in the City of Lawrenceburg, State of Indiana

GridPoint: 15

Section 16

Township 5 North

Range 1 We

Monumentation: Existing concrete monument W/ Alum. Survey cap

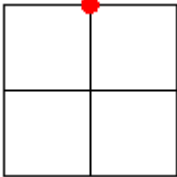
Height: Flush

Condition: Good

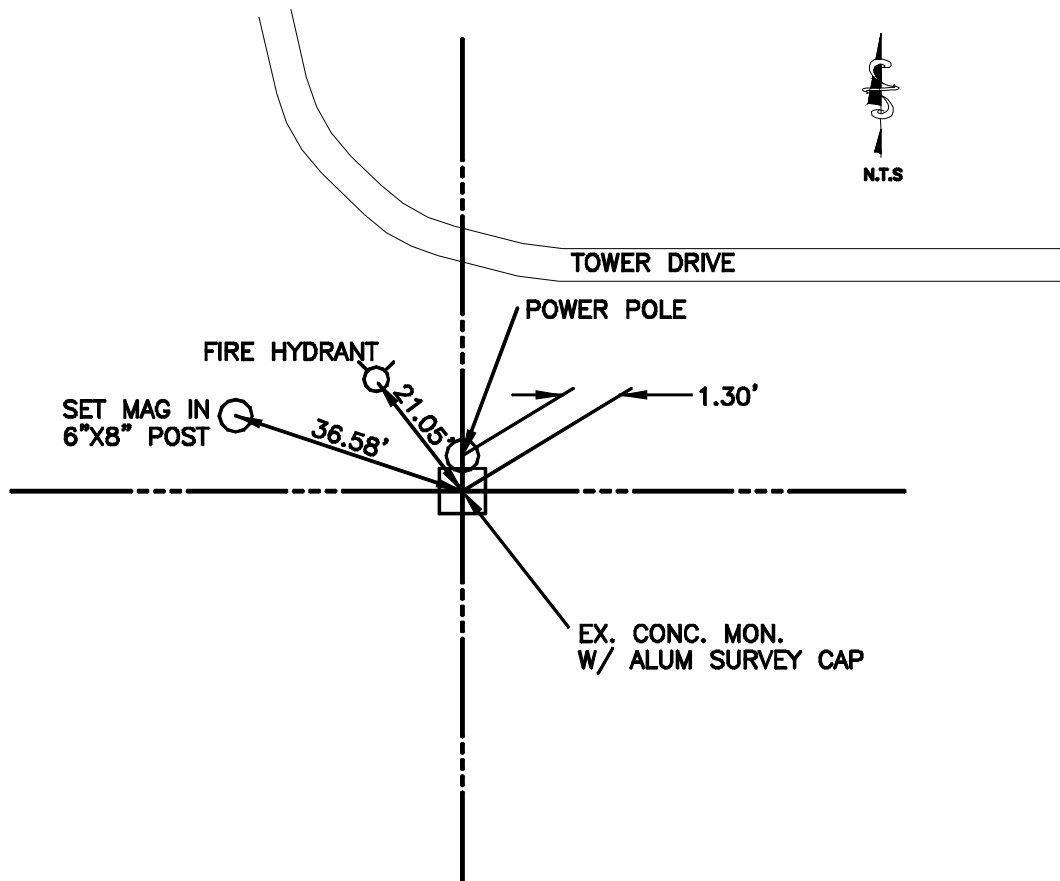
Northing: 1404911.38 Easting: 550036.37

Procedure: Referenced by a 130.325 Acre survey by Roger Woodfill dated October, 1995

Position



Sketch



Coordinate determination method used is GPS and/or conventional traverse. Horizontal datum system is NAD '83. The Indiana minimum standards of measurements were used according to state statutes 865 IAC 1-12-7 and 865 IAC 1-12-8 (known as Rule 12). Northings and Eastings based on Indiana State Plane Coordinates derived from City of Lawrenceburg GIS monuments which are the basis of subject coordinate system.

Instruments used were 05" Topcon Total Stations and Leica SR530 GPS (System 500) or Sokkia Locus.

David T. Crouch, LS-0196 on March 12, 2003.  
Registered Surveyor's Name, Number

Photograph



201 W. William Street  
Lawrenceburg, IN 47025  
(812) 537-2145

# Dearborn County Section Corners

in the City of Lawrenceburg, State of Indiana

GridPoint: 16

Section 9

Township 5 North

Range 1 We

Monumentation: Existing iron pin in concrete Mon.

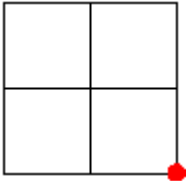
Height: Flush

Condition: Fair

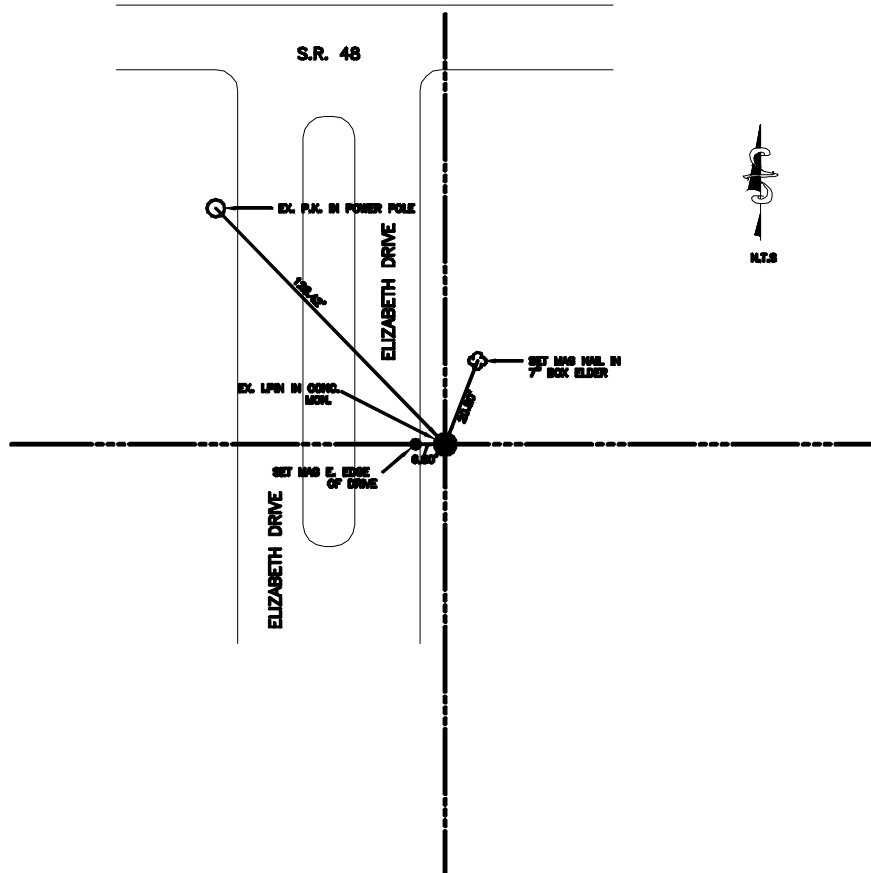
Northing: 1404923.21 Easting: 552655.21

Procedure: Referenced from Copperfield Estates surveyed by Roger Woodfill dated November 21, 1974

Position



Sketch



Coordinate determination method used is GPS and/or conventional traverse. Horizontal datum system is NAD '83. The Indiana minimum standards of measurements were used according to state statutes 865 IAC 1-12-7 and 865 IAC 1-12-8 (known as Rule 12). Northings and Eastings based on Indiana State Plane Coordinates derived from City of Lawrenceburg GIS monuments which are the basis of subject coordinate system.

Instruments used were 05" Topcon Total Stations and Leica SR530 GPS (System 500) or Sokkia Locus.

David T. Crouch, LS-0196 on December 7, 2000.  
Registered Surveyor's Name, Number

Photograph



201 W. William Street  
Lawrenceburg, IN 47025  
(812) 537-2145

# Dearborn County Section Corners

in the City of Lawrenceburg, State of Indiana

GridPoint: 18

Section 16

Township 5 North

Range 1 We

Monumentation: 4 X 4 Existing concrete monument w/ Woodfill cap S-0161

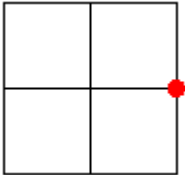
Height: 0.4' Above Ground

Condition: Good

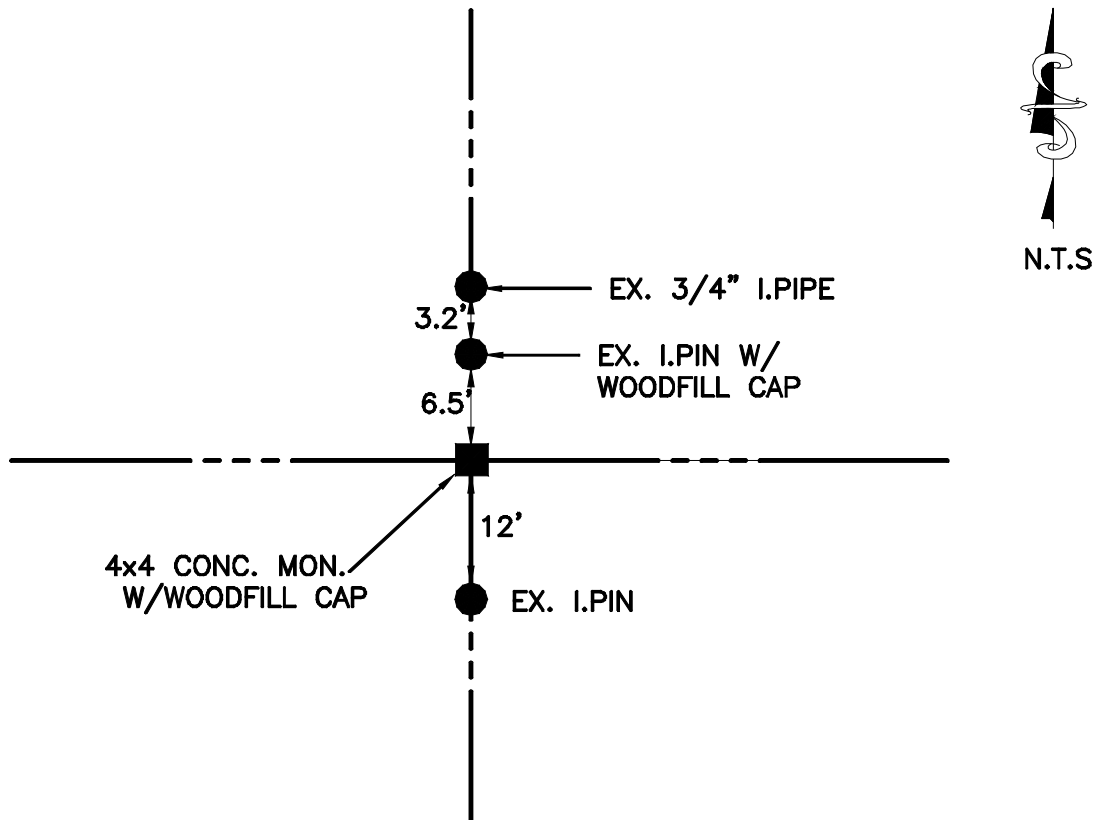
Northing: 1402301.28 Easting: 552695.70

Procedure: Referenced from the Dearborn County Section Corner Book dated June 25, 1998

Position



Sketch



Coordinate determination method used is GPS and/or conventional traverse. Horizontal datum system is NAD '83. The Indiana minimum standards of measurements were used according to state statutes 865 IAC 1-12-7 and 865 IAC 1-12-8 (known as Rule 12). Northings and Eastings based on Indiana State Plane Coordinates derived from City of Lawrenceburg GIS monuments which are the basis of subject coordinate system.

Instruments used were 05" Topcon Total Stations and Leica SR530 GPS (System 500) or Sokkia Locus.

David T. Crouch, LS-0196 on December 7, 2000.  
Registered Surveyor's Name, Number

Photograph



201 W. William Street  
Lawrenceburg, IN 47025  
(812) 537-2145

# Dearborn County Section Corners

in the City of Lawrenceburg, State of Indiana

GridPoint: 19

Section 21

Township 5 North

Range 1 We

Monumentation: Existing stone

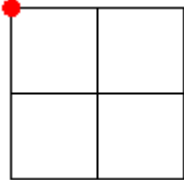
Height:

Condition: Good

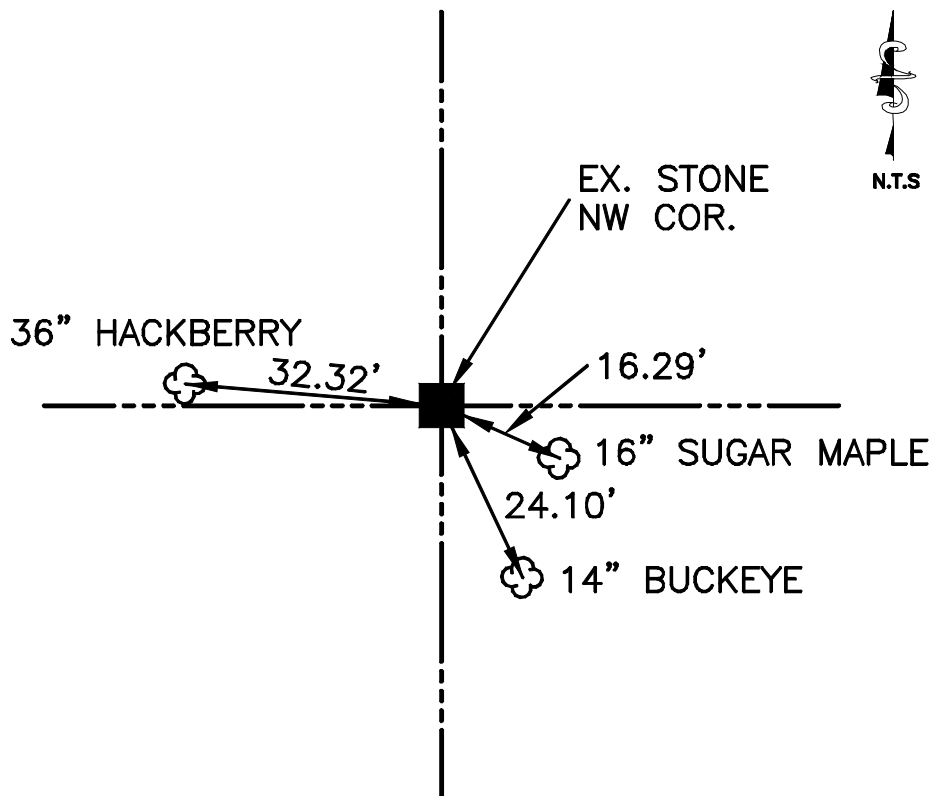
Northing: 1399691.43      Easting: 547398.19

Procedure: 167.687 acre survey by D.T.Crouch dated December 21, 1994 (Retracement survey of the lands of Hamline Chapel United Methodist Church)

Position



Sketch



Coordinate determination method used is GPS and/or conventional traverse. Horizontal datum system is NAD '83. The Indiana minimum standards of measurements were used according to state statutes 865 IAC 1-12-7 and 865 IAC 1-12-8 (known as Rule 12). Northings and Eastings based on Indiana State Plane Coordinates derived from City of Lawrenceburg GIS monuments which are the basis of subject coordinate system.

Instruments used were 05" Topcon Total Stations and Leica SR530 GPS (System 500) or Sokkia Locus.

David T. Crouch, LS-0196 on March 7, 2000.  
Registered Surveyor's Name, Number

Photograph



201 W. William Street  
Lawrenceburg, IN 47025  
(812) 537-2145

# Dearborn County Section Corners

in the City of Lawrenceburg, State of Indiana

GridPoint: 20

Section 16

Township 5 North

Range 1 We

Monumentation: Set concrete monument

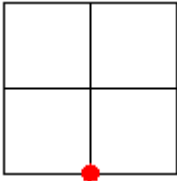
Height: Flush

Condition: New

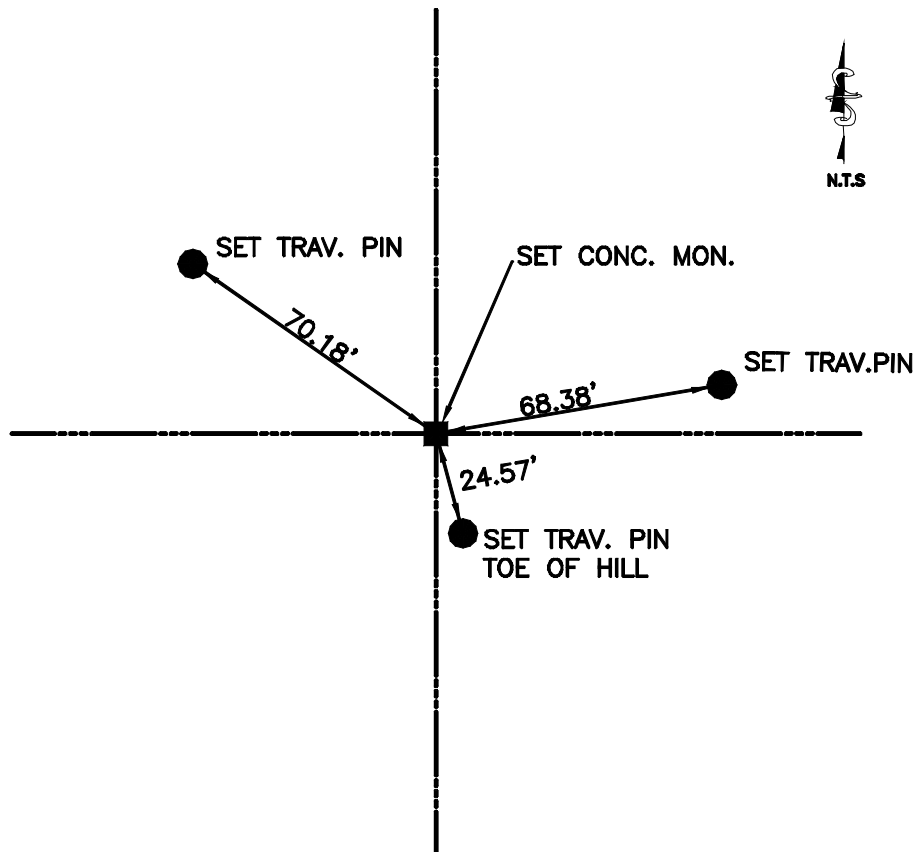
Northing: 1399690.81 Easting: 550058.85

Procedure: Referenced by a 47.616 Acre survey by D.T. Couch dated December, 1998

Position



Sketch



Coordinate determination method used is GPS and/or conventional traverse. Horizontal datum system is NAD '83. The Indiana minimum standards of measurements were used according to state statutes 865 IAC 1-12-7 and 865 IAC 1-12-8 (known as Rule 12). Northings and Eastings based on Indiana State Plane Coordinates derived from City of Lawrenceburg GIS monuments which are the basis of subject coordinate system.

Instruments used were 05" Topcon Total Stations and Leica SR530 GPS (System 500) or Sokkia Locus.

David T. Crouch, LS-0196 on January 22, 2003.  
Registered Surveyor's Name, Number

Photograph



201 W. William Street  
Lawrenceburg, IN 47025  
(812) 537-2145

# Dearborn County Section Corners

in the City of Lawrenceburg, State of Indiana

GridPoint: 21

Section 16

Township 5 North

Range 1 We

Monumentation: Existing concrete monument w/ woodfill cap

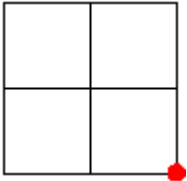
Height: 0.3' Above Ground

Condition: Good

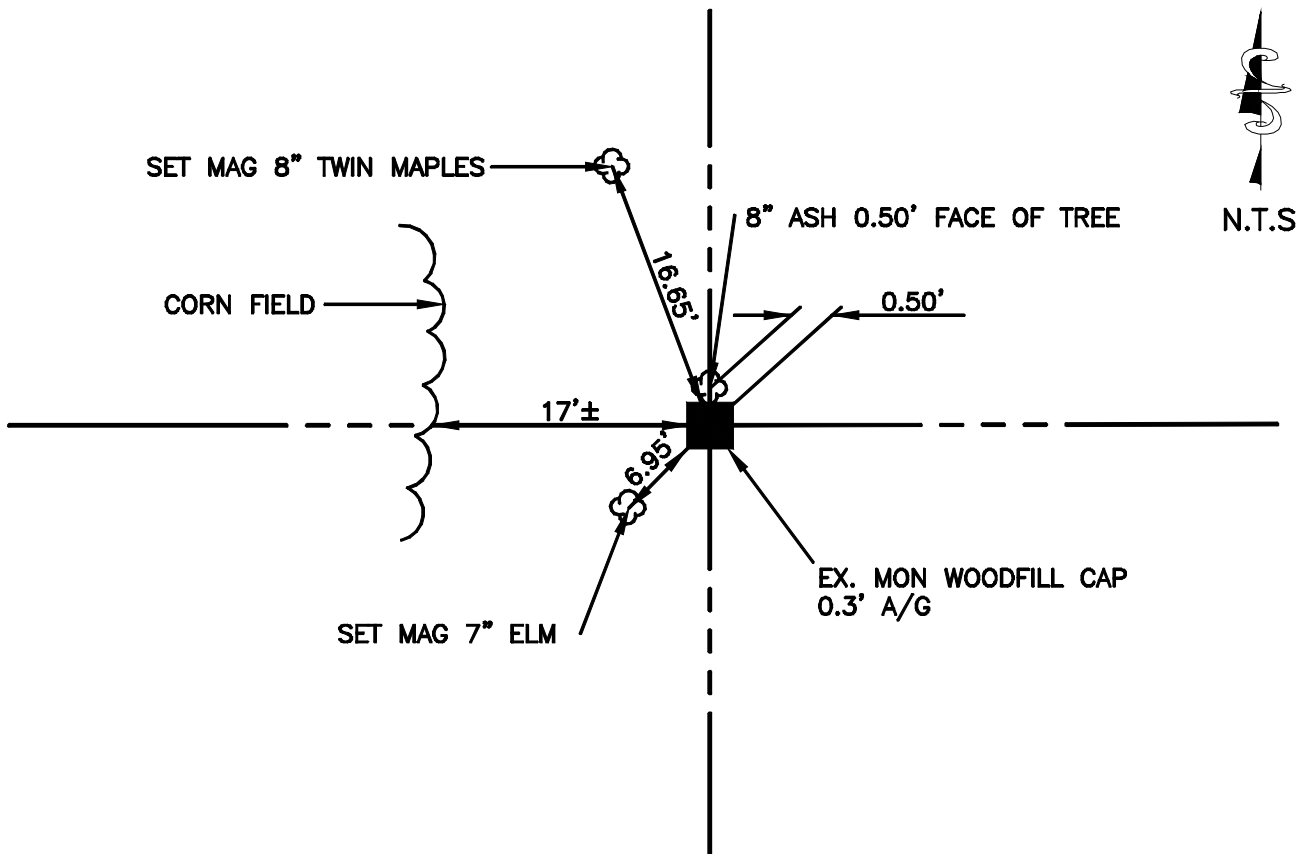
Northing: 1399690.14 Easting: 552719.85

Procedure: Recovered existing district nine Monument

Position



Sketch



Coordinate determination method used is GPS and/or conventional traverse. Horizontal datum system is NAD '83. The Indiana minimum standards of measurements were used according to state statutes 865 IAC 1-12-7 and 865 IAC 1-12-8 (known as Rule 12). Northings and Eastings based on Indiana State Plane Coordinates derived from City of Lawrenceburg GIS monuments which are the basis of subject coordinate system.

Instruments used were 05" Topcon Total Stations and Leica SR530 GPS (System 500) or Sokkia Locus.

David T. Crouch, LS-0196 on December 15, 2000.  
Registered Surveyor's Name, Number

Photograph



201 W. William Street  
Lawrenceburg, IN 47025  
(812) 537-2145

# Dearborn County Section Corners

in the City of Lawrenceburg, State of Indiana

GridPoint: 22

Section 21

Township 4 North

Range 2 We

Monumentation: 8" Existing fence post

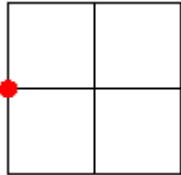
Height: Above Ground

Condition: Good

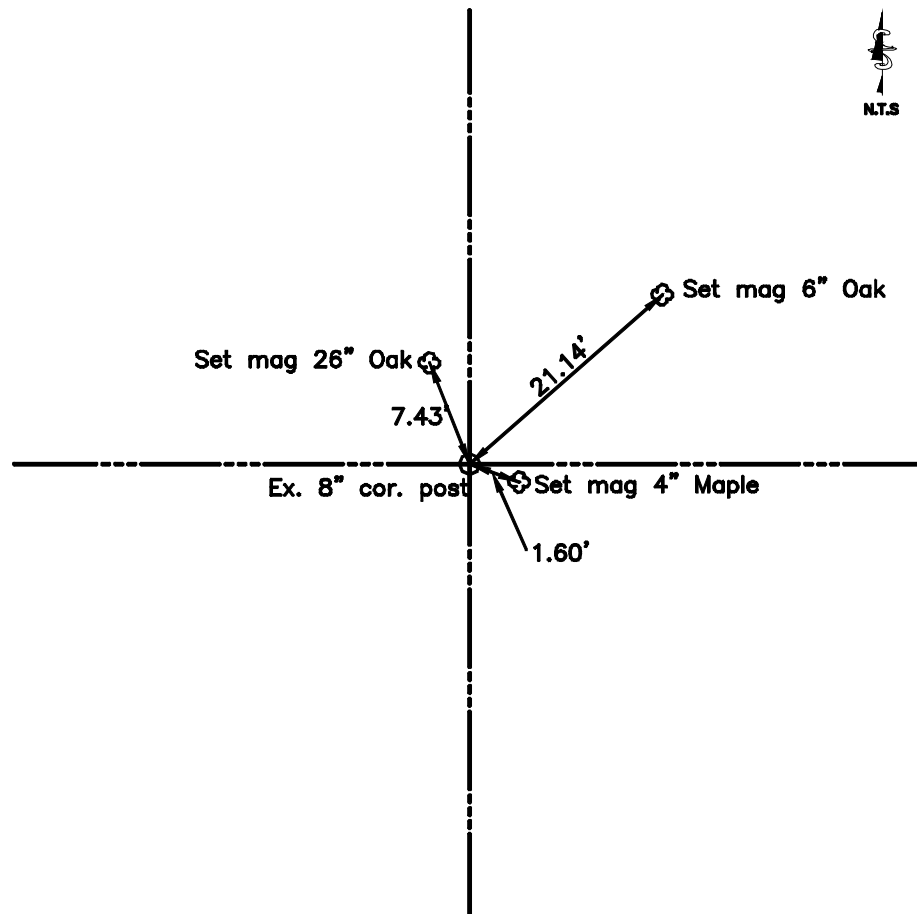
Northing: 1397097.02 Easting: 547416.21

Procedure: Referenced by a 11.737 acre survey by David T. Crouch dated December 30, 1988.

Position



Sketch



Coordinate determination method used is GPS and/or conventional traverse. Horizontal datum system is NAD '83. The Indiana minimum standards of measurements were used according to state statutes 865 IAC 1-12-7 and 865 IAC 1-12-8 (known as Rule 12). Northings and Eastings based on Indiana State Plane Coordinates derived from City of Lawrenceburg GIS monuments which are the basis of subject coordinate system.

Instruments used were 05" Topcon Total Stations and Leica SR530 GPS (System 500) or Sokkia Locus.

Photograph



David T. Crouch, LS-0196 on November 14, 2003.  
Registered Surveyor's Name, Number



201 W. William Street  
Lawrenceburg, IN 47025  
(812) 537-2145

# Dearborn County Section Corners

in the City of Lawrenceburg, State of Indiana

GridPoint: 23

Section 21

Township 5 North

Range 1 We

Monumentation: Set Railroad Spike

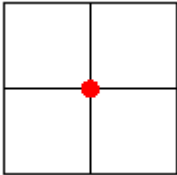
Height: Flush

Condition: New

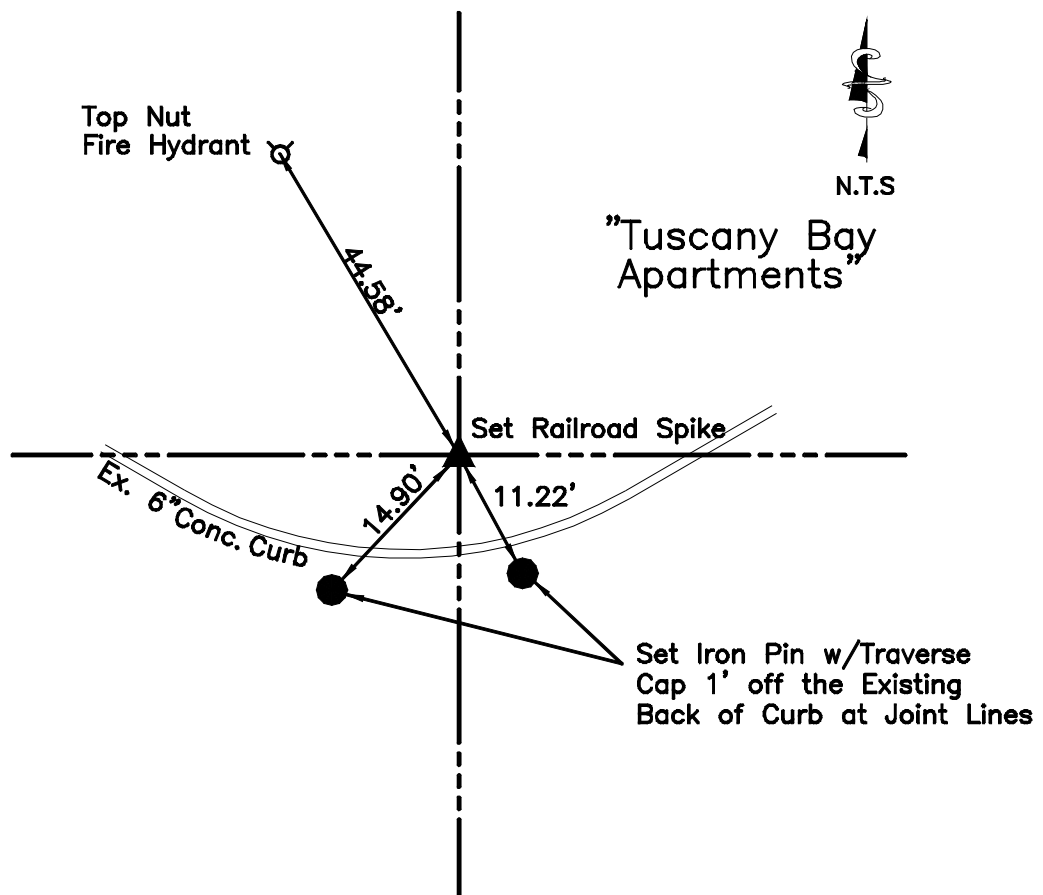
Northing: 1397108.69 Easting: 550073.30

Procedure: Double Proportionate Measurement was applied for the establishment of subject corner.

Position



Sketch



Coordinate determination method used is GPS and/or conventional traverse. Horizontal datum system is NAD '83. The Indiana minimum standards of measurements were used according to state statutes 865 IAC 1-12-7 and 865 IAC 1-12-8 (known as Rule 12). Northings and Eastings based on Indiana State Plane Coordinates derived from City of Lawrenceburg GIS monuments which are the basis of subject coordinate system.

Instruments used were 05" Topcon Total Stations and Leica SR530 GPS (System 500) or Sokkia Locus.

David T. Crouch, LS-0196 on November 14, 2003.  
Registered Surveyor's Name, Number

Photograph



201 W. William Street  
Lawrenceburg, IN 47025  
(812) 537-2145

# Dearborn County Section Corners

in the City of Lawrenceburg, State of Indiana

GridPoint: 24

Section 21

Township 5 North

Range 1 We

Monumentation: Set Conc. Mon. w/2-1/2" Brass Disc.

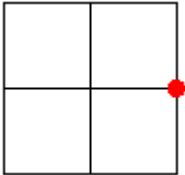
Height: Flush

Condition: New

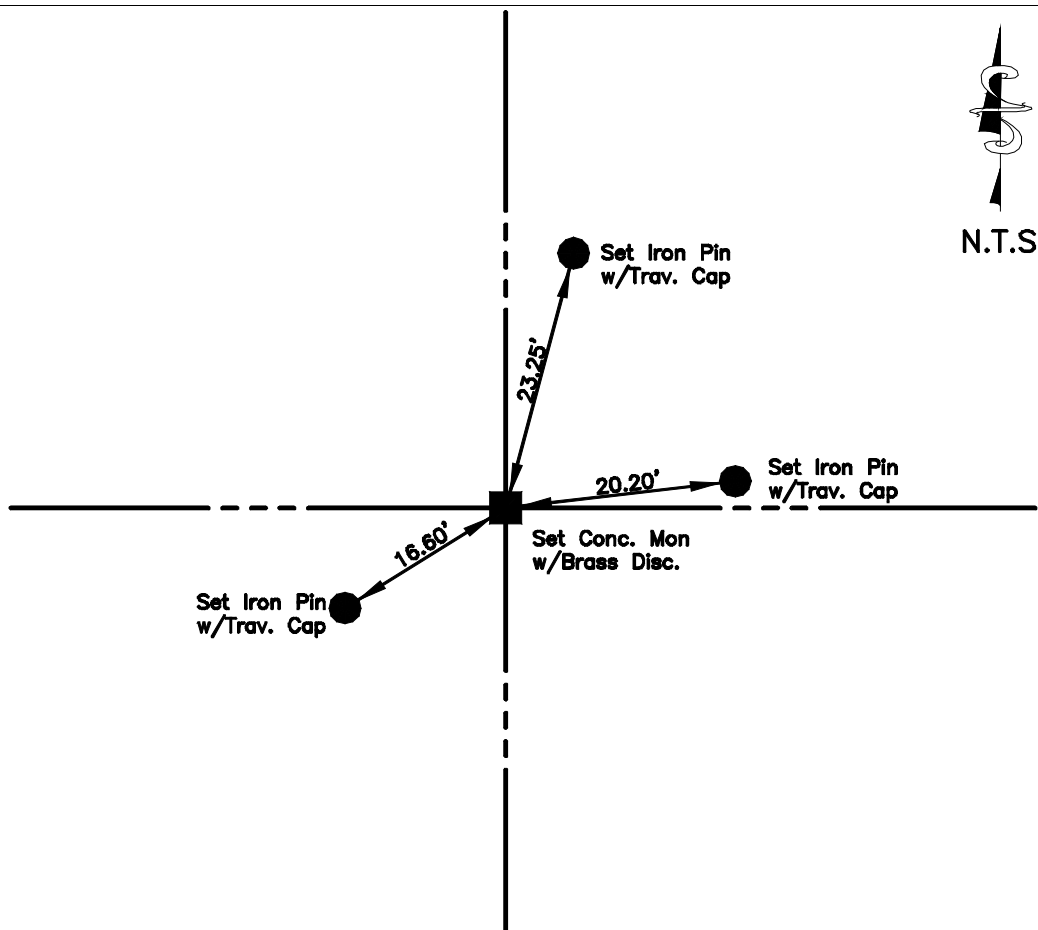
Northing: 1397120.36 Easting: 552729.12

Procedure: Single Proportionate Measurement was applied for the establishment of subje corner.

Position



Sketch



Coordinate determination method used is GPS and/or conventional traverse. Horizontal datum system is NAD '83. The Indiana minimum standards of measurements were used according to state statutes 865 IAC 1-12-7 and 865 IAC 1-12-8 (known as Rule 12). Northings and Eastings based on Indiana State Plane Coordinates derived from City of Lawrenceburg GIS monuments which are the basis of subject coordinate system.

Instruments used were 05" Topcon Total Stations and Leica SR530 GPS (System 500) or Sokkia Locus.

David T. Crouch, LS-0196 on May 27, 2003.  
Registered Surveyor's Name, Number

Photograph



201 W. William Street  
Lawrenceburg, IN 47025  
(812) 537-2145

# Dearborn County Section Corners

in the City of Lawrenceburg, State of Indiana

GridPoint: 25

Section 21

Township 5 North

Range 1 We

Monumentation: Existing concrete monument w/ Woodfill cap

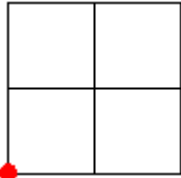
Height: Flush

Condition: Good

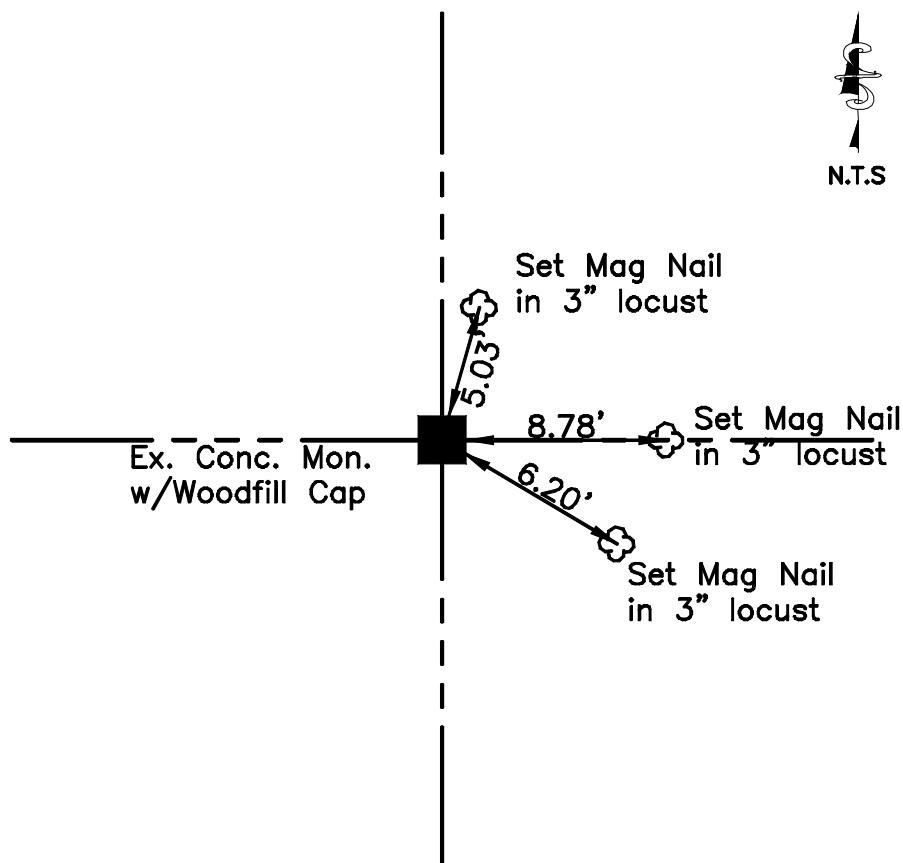
Northing: 1394529.32 Easting: 547436.62

Procedure: Plat of survey for Indiana & Michigan Power Company. Surveyed by Bayer Becker Engineers, dated 9-16-94

Position



Sketch



Coordinate determination method used is GPS and/or conventional traverse. Horizontal datum system is NAD '83. The Indiana minimum standards of measurements were used according to state statutes 865 IAC 1-12-7 and 865 IAC 1-12-8 (known as Rule 12). Northings and Eastings based on Indiana State Plane Coordinates derived from City of Lawrenceburg GIS monuments which are the basis of subject coordinate system.

Instruments used were 05" Topcon Total Stations and Leica SR530 GPS (System 500) or Sokkia Locus.

David T. Crouch, LS-0196 on May 27, 2003.  
Registered Surveyor's Name, Number

Photograph



201 W. William Street  
Lawrenceburg, IN 47025  
(812) 537-2145

# Dearborn County Section Corners

*in the City of Lawrenceburg, State of Indiana*

GridPoint: 26

Section 21

Township 5 North

Range 1 We

Monumentation:

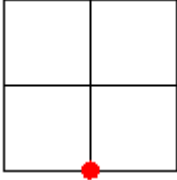
Height:

Condition:

Northing: 1394539.95    Easting: 550087.50

Procedure: Calculated corner - No point set, point falls in existing fly - Ash Pond.

Position



Sketch

**Corner cannot be set. The Section corner falls in existing fly-ash pond.**

Coordinate determination method used is GPS and/or conventional traverse. Horizontal datum system is NAD '83. The Indiana minimum standards of measurements were used according to state statutes 865 IAC 1-12-7 and 865 IAC 1-12-8 (known as Rule 12). Northings and Eastings based on Indiana State Plane Coordinates derived from City of Lawrenceburg GIS monuments which are the basis of subject coordinate system.

Instruments used were 05" Topcon Total Stations and Leica SR530 GPS (System 500) or Sokkia Locus.

David T. Crouch, LS-0196 on  
Registered Surveyor's Name, Number

Photograph

**NO  
PICTURE  
AVAILABLE**



201 W. William Street  
Lawrenceburg, IN 47025  
(812) 537-2145

# Dearborn County Section Corners

in the City of Lawrenceburg, State of Indiana

GridPoint: 27

Section 21

Township 5 North

Range 1 We

Monumentation: Existing concrete monument w/Woodfill cap

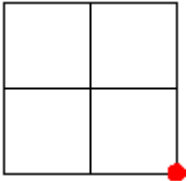
Height: 0.3' Above Ground

Condition: Poor

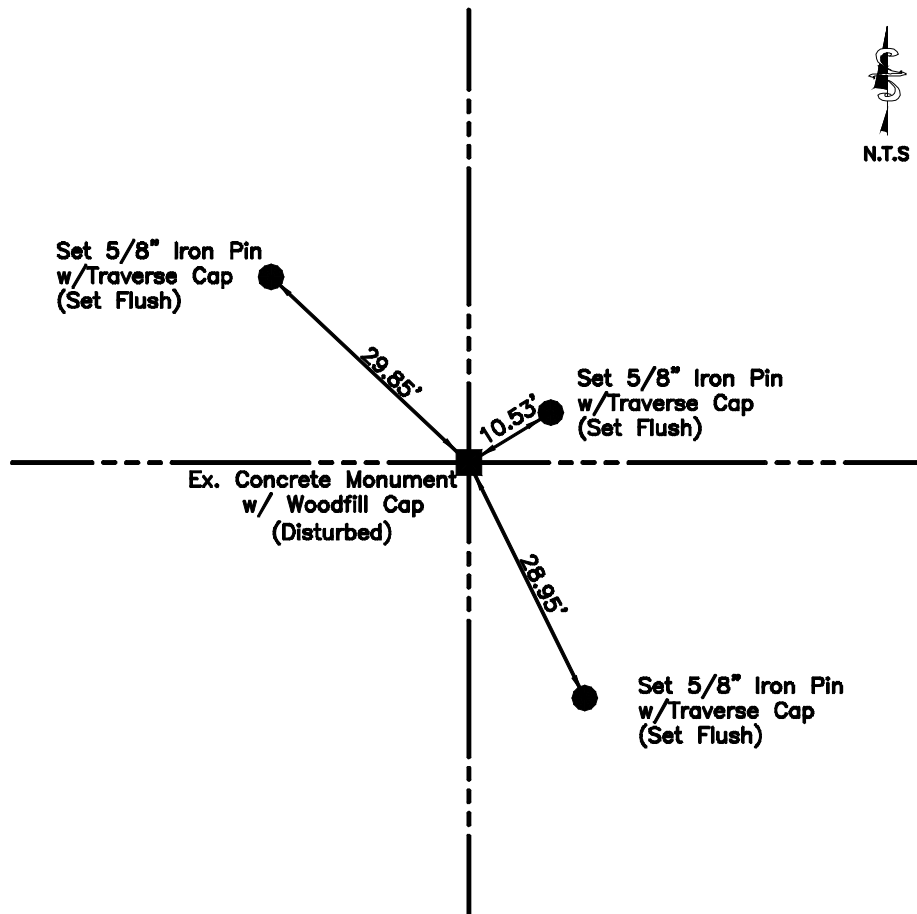
Northing: 1394550.58 Easting: 552738.38

Procedure: Plat of survey for Indiana & Michigan Power Company. Surveyed by Bayer Becker Engineers, dated 9-16-94

Position



Sketch



Coordinate determination method used is GPS and/or conventional traverse. Horizontal datum system is NAD '83. The Indiana minimum standards of measurements were used according to state statutes 865 IAC 1-12-7 and 865 IAC 1-12-8 (known as Rule 12). Northings and Eastings based on Indiana State Plane Coordinates derived from City of Lawrenceburg GIS monuments which are the basis of subject coordinate system.

Instruments used were 05" Topcon Total Stations and Leica SR530 GPS (System 500) or Sokkia Locus.

David T. Crouch, LS-0196 on May 27, 2003.  
Registered Surveyor's Name, Number

Photograph



201 W. William Street  
Lawrenceburg, IN 47025  
(812) 537-2145